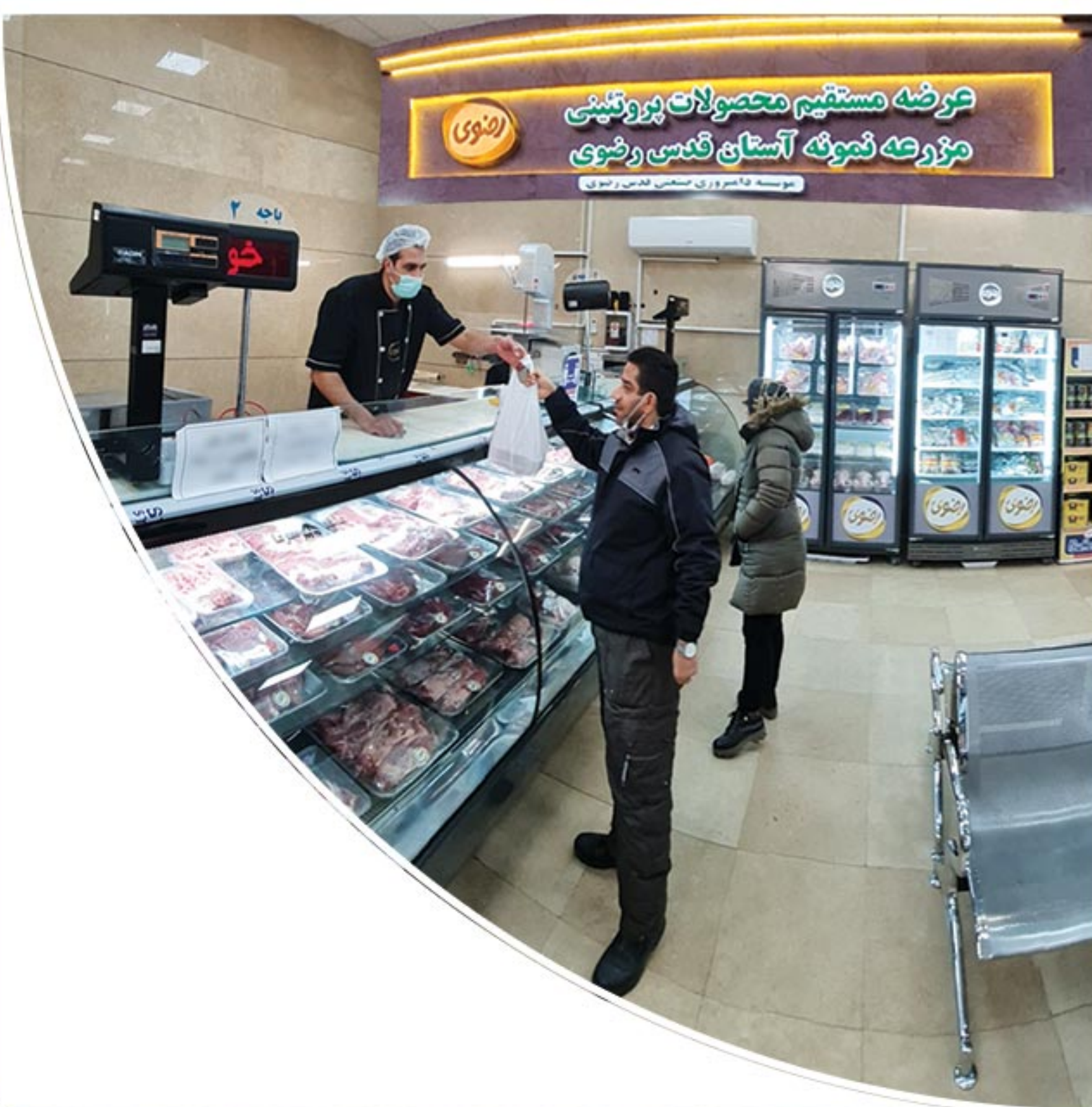
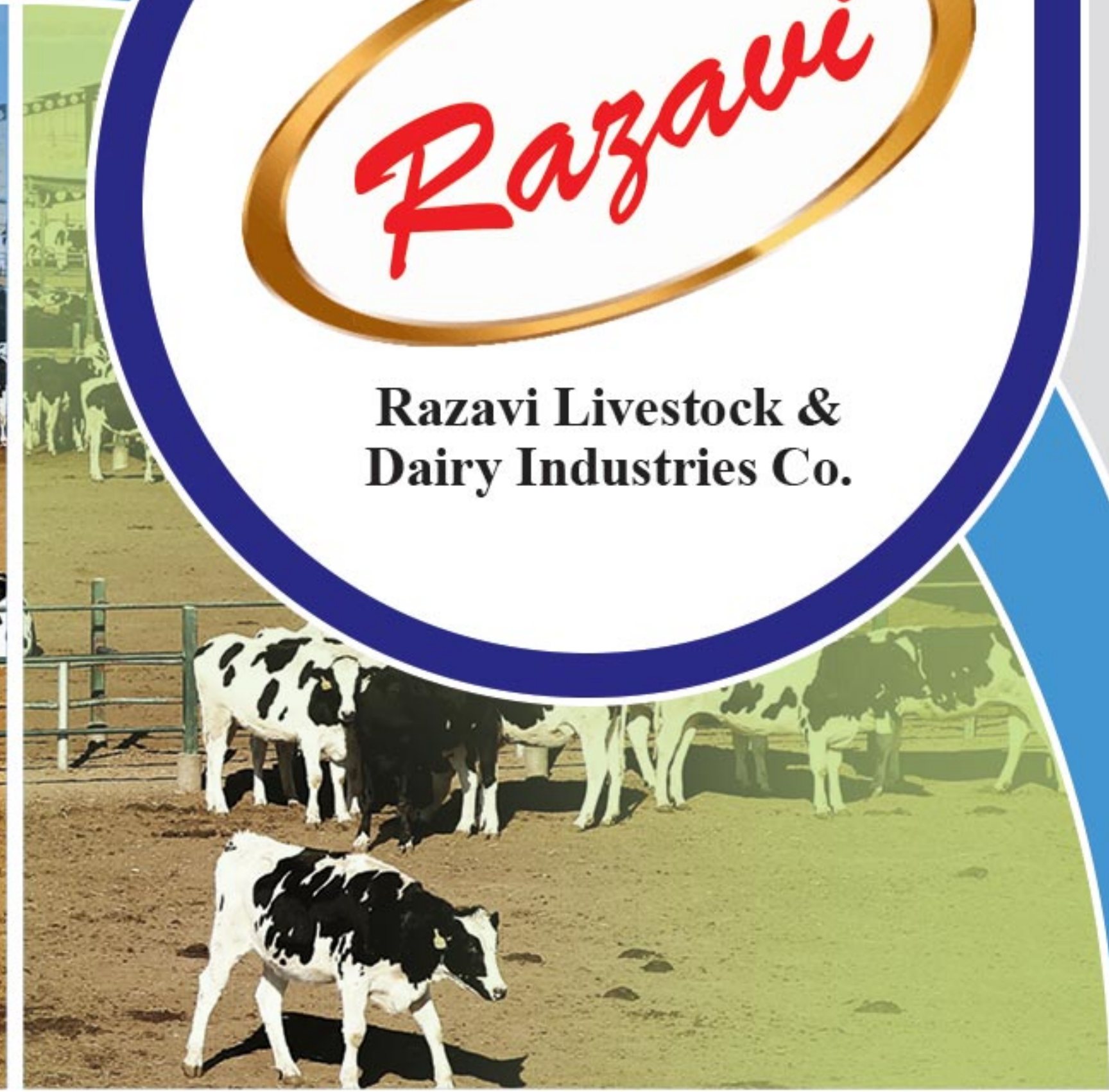




Razavi Livestock &  
Dairy Industries Co.



Complete Production Chain, Guarantees General Health

# RAZAVI Livestock and Dairy Industries Co.

Direct Supply of Protein Products





## **Production Prosperity:**

- Production prosperity is stopped due to conditions, one of which is work. This work must be jihadi; extraordinary work must be done in the country so that the production prosperity can be created; if there is production prosperity, this is one of the main pillars of the resistance economy.

Supreme Leader: 2019 April 24





## Macro strategies:

**(Expressed by Custodian of the Astan Quds Razavi:)**

The custodian of Astan Quds Razavi, Mr. Hujjat al-Islam Ahmad Marvi, during his visit to Razavi Livestock & Dairy Industries Company and during the official opening ceremony of the first phase of the development of Kenevist Industrial Livestock Complex, he described the macro strategies and road map to achieve the high goals of the company as follows was stated:

- Spiritualism is essential in all economic activities.
- Activities should be carried out in companies that cause the dignity and pride of the right front against the arrogant powers of the world.
- Companies should move towards technology and expand knowledge-based activities.
- Companies must have a global perspective in planning and carrying out projects.
- Specialization focusing on youth should be one of the basic strategies of companies. These two factors have always made Iran proud.
- Synergy of healthy forces with piety and motivation is necessary in the field of economic activities.
- The company should be a leader, driver and inspiration in the Livestock industry using all internal capacities.
- Do not be afraid of the power of economic mafia traders in the path of progress.





## Introduction:

- Razavi Livestock & Dairy Industries Company is one of the most productive subsidiaries of the Astan Quds Razavi Endowment Productivity Foundation (epf), as the economic hub of the activities of Imam Reza Holy Shrine, relying on the efficient and experienced workforce, as well as using the latest technologies of the Livestock & Dairy Industries.
- The land area at the disposal of this company is about 3,500 hectares, which has been exploited in the cities of Mashhad, Sarakhs , Torbat-e Heydariyeh, Chenaran and Esfarayen.





- This company is proud to have 23 subsidiaries, including heavy livestock breeding complexes with a capacity of 19,000 heads with a daily production of about 300 tons of premium industrial milk, light livestock breeding complexes with a capacity of 6000 productive livestock heads, as well as having animal feed factories with Flicker micronizer technology, a dairy products factory with an annual production of about 90 thousand tons of dairy products, with the ownership of Razavi cold stores and a capillary distribution center of products, has converted to the largest industrial complex in the production chain of Livestock & Dairy Industries animal husbandry and dairy industry in the east of country.





## Company shareholders:

- 1. Astan Quds Razavi
- 2. Razavi Food Products Co.
- 3. Razavi Flour Co.
- 4. Razavi Agricultural Co.
- 5. Razavi Economic Organization (REO)

## Company subsidiaries:

- 1. The specialized unit for breeding heavy livestock and producing Infant milk formula (IMF) Grade located in Razavi Kenevist
- 2. A specialized unit for breeding heavy livestock and producing premium industrial milk located in Fariman (Malek\_endowments)
- 3. The specialized unit for breeding heavy livestock and producing of premium industrial milk located in Esfarayen
- 4. The specialized unit for breeding heavy livestock and producing of premium industrial milk located in Torbat-e Heydariyeh
- 5. The specialized units for breeding heavy livestock and producing of premium industrial milk, unit two located in Nemooneh Farm of Astan Quds Razavi
- 6. The specialized units for breeding heavy livestock and producing of premium industrial milk, unit three located in Nemooneh Farm of Astan Quds Razavi



- 7. The specialized cattle fattening units, unit one located in Nemooneh Farm of Astan Quds Razavi
- 8. specialized cattle fattening units, unit one located in Fariman (Malek\_ endowments)
- 9. The specialized unit for breeding heavy livestock and producing premium industrial milk located in cattle Chenaran (Malek\_ endowments)
- 10. The specialized breeding unit for crossbreeding light livestock located in Razavi Kenevist.
- 11. The light livestock fattening unit for phase four located in Nemooneh Farm of Astan Quds Razavi
- 12. Pasture land nicknamed as Madjoooni for light livestock grazing
- 13. Agricultural lands nicknamed Chah Gul Mohammadpur for keeping light livestock
- 14. Light livestock commercial herd unit located in Sarakhs
- 15. Dairy products production plant located in Nemooneh Farm of Astan Quds Razavi
- 16. Capillary distribution network of dairy products located at the beginning of the Asian highway
- 17. A collection of cold stores for dairy products located in the beginning of the Asian highway
- 18. The direct supply store of protein & dairy products, Branch 1, located in No. 9, behind the bus station, in front of Jam-e Asal, Pirouzi Blvd.
- 19. The direct supply store of protein & dairy products, branch two, located in the Etma Store, meat stall, Daneshjoo square
- 20. The direct supply store of protein & dairy products, branch three, located in Razavi Hypermarket, meat stall, before Payambar Azam 2, Asian highway.
- 21. Poultry farm with 100,000 chickens, located in Razavi Kenevist.
- 22. The direct supply store of protein and dairy products - branch 4 located in Henarstan Square, Pirouzi Blvd.
- 23. The direct supply store of protein and dairy products, branch 5, located in Jahan ara 26 st, Shahrama Hypermarket
- 24. The direct supply store of protein and dairy products - branch 6 located in Toos Blvd, Bama Store







## Livestock products:

- Selling dairy products in the Combi group of pasteurized and sterilized
- Selling raw milk
- Selling heifers (young female cow)
- Selling cow manure
- Selling light and heavy livestock
- Selling sperm livestock with premium characteristics
- Selling protein products in hypermarkets
- Selling premium raw milk for the production of infant formula milk (IMF Grade)





Supplying  
**%25**  
of the country's  
import needs

## The manufacturing process of our infant milk formula (IMF) grade milk powders:

- According to the calculations of the amount of infant-grade skimmed milk powder imported into the country and the conversion rate of fresh milk to milk powder per year, about 110,000 tons of premium quality raw milk is needed to produce infant formula, that is, about 300 tons of IMF grade raw milk daily.
- Now, with the completion of the first phase of the Kenevist Animal-industrial complex (AIC) development project, about 30,000 tons of premium IMF grade raw milk that can be used to produce infant formula are produced in Razavi Livestock & Dairy Industries Company. In this way, this company alone currently supplies about 25% of the country's import needs in this field.





High fat yogurt  
● 650 gr



Low fat yogurt  
● 650 gr



Traditional yogurt  
● 1400 gr



Traditional yogurt  
● 900 gr



Low fat Yogurt (Octalight)  
● 1700 gr



High fat Yogurt (Octafat)  
● 1700 gr



Low fat yogurt  
● 1200 gr



High fat yogurt  
● 1400 gr



High fat stirred yogurt  
● 800 gr



High fat stirred yogurt  
● 1700 gr



shallot yogurt  
● 500 gr



shallot yogurt  
● 100 - 250 gr



shallot yogurt  
● 9 kg



Strained yogurt  
● 9 kg



High fat yogurt  
● 9 kg



low-fat yogurt  
● 9 kg



Asthan Quds Razavi



Razavi Livestock & Dairy Industries Co.



## Dairy products | ● yogurt group



High fat yogurt  
● 100 gr



Low fat yogurt  
● 90 gr





Daily milk  
900 ml



Low-fat milk  
950 ml



High fat milk  
950 ml



cocoa milk  
950 ml



UHT banana milk  
1000 ml



UHT Low fat milk  
1000 ml



UHT High fat milk  
1000 ml



UHT cocoa milk  
1000 ml



UHT banana milk  
200 ml



UHT Low fat milk  
200 ml



UHT Middle fat milk  
200 ml



UHT cocoa milk  
200 ml



UHT Vitamilk (Fortified by D3)  
200 ml



UHT strawberry milk  
200 ml



UHT honey milk  
200 ml



UHT date milk  
200 ml



Aslan Quds Razavi



Razavi Livestock & Dairy Industries Co.



Daily cocoa milk  
800 ml



Daily banana milk  
800 ml

Dairy products | milk group





Lactic cheese  
● 280 gr



Cream cheese  
● 100 gr



Cream cheese  
● 80 gr



Cream cheese  
● 30 gr



Feta cheese  
● 16 kg



Feta cheese  
● 10 kg



Feta cheese  
● 3.5 kg



Feta cheese  
● 400 gr



butter  
● 50 gr



butter  
● 25 gr



butter  
● 10 gr



UHT cream  
● 200 gr



Ghee  
● 16 kg



Ghee  
● 4.5 kg



Ghee  
● 700 gr



butter  
● 100 gr



## Dairy products | ● cheese and Ghee group



Cream cheese filled with cumin | ● 100 gr



Ghee  
● 300 gr





Yogurt drink  
1.5 L



Yogurt drink  
1500 ml



Yogurt drink  
200 cc



Daily milk  
200 cc



Liquid curd  
700 gr



Liquid curd  
500 gr



liquid curd  
200 gr



liquid curd  
200 gr

## Dairy products | Yogurt drink and Kashk(curd) group



### certificates and Awards:

- Selected by the Industrial Sample Unit of the Vice-Chancellor for Food & Drug - University of Medical Sciences of Khorasan Razavi in 2016, 2019, 2022
- IMF GRADE milk certificate for the producing of infant formula from Denon Global France
- Obtaining several health apple (Seeb-salamat) marks from the Food and Drug Organization of the country
- Obtaining three international standards for the design and establishment of quality and safety management systems
- Obtaining One-Star Certificate of Appreciation from the National Centre For Excellencein (NCFE)the sixth excellence evaluation period
- The Top unit in the field of preventing and dealing with the corona virus and promoting occupational health programs in 2021 on behalf of the Vice President of Health of Mashhad University of Medical Sciences in the field of dairy products
- HACCP
- ISO 9001:2015
- ISO 22000: 2018





## Goals & Vision:

- In the horizon of 2031, Razavi Livestock & Dairy Industries Company will be a Knowledge enterprise, brand owner and owner of the highest quality livestock and dairy products in the region and an inspiration for business excellence.



# FARM <sup>TO</sup> FORK

Complete Chain of value in Razavi Livestock & Dairy Industries Co.



Livestock feed plant  
Flicker micronizer plant



Breeding management , reproduction  
and livestock health and treatment



Production of fodder and  
grain and livestock feed supplement



The factory of Various  
and tasty dairy products



Production of raw milk  
for dairy products



Production of eugenic male calves  
and lambs for meat producing



Direct supply stores



IRANIAN TABLE (CONSUMER)



Capillary distribution







Razavi Livestock & Dairy Industries Co. relies on young, committed, efficient, expert and experienced workers and also using up-to-date technologies of animal husbandry and dairy industry. It has created a **complete production chain from the farm to fork** and has been able to produce quality livestock products and diverse and tasty dairy products.

 051 - 33960510 - 12

 051 - 33963009  
(Customer's voice)

 Mashhad 5th km of mashhad-sarakhs Road  
Nemooneh Farm of Astan Quds Razavi

 [www.daqr.ir](http://www.daqr.ir)

 @razavidairy